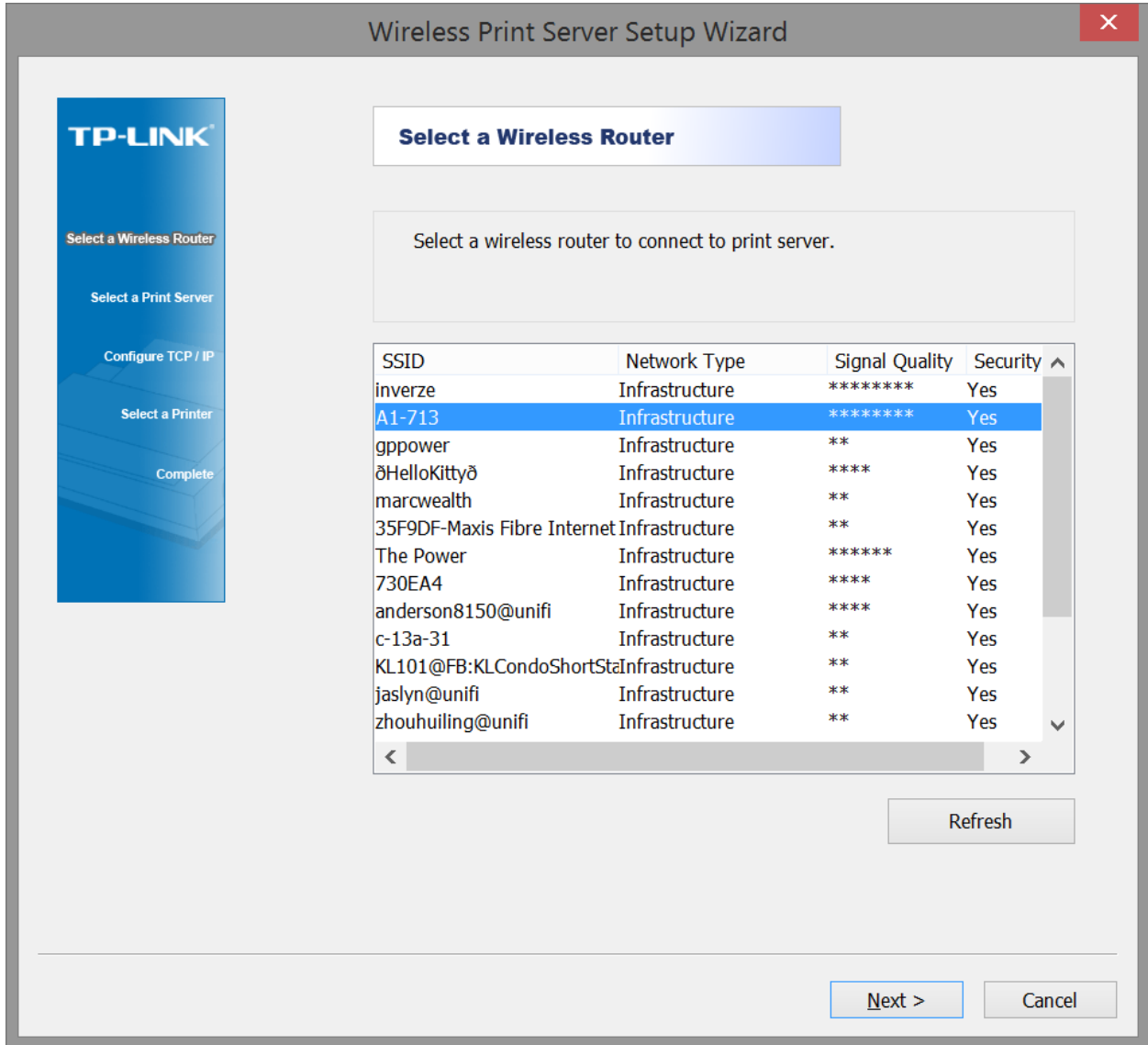
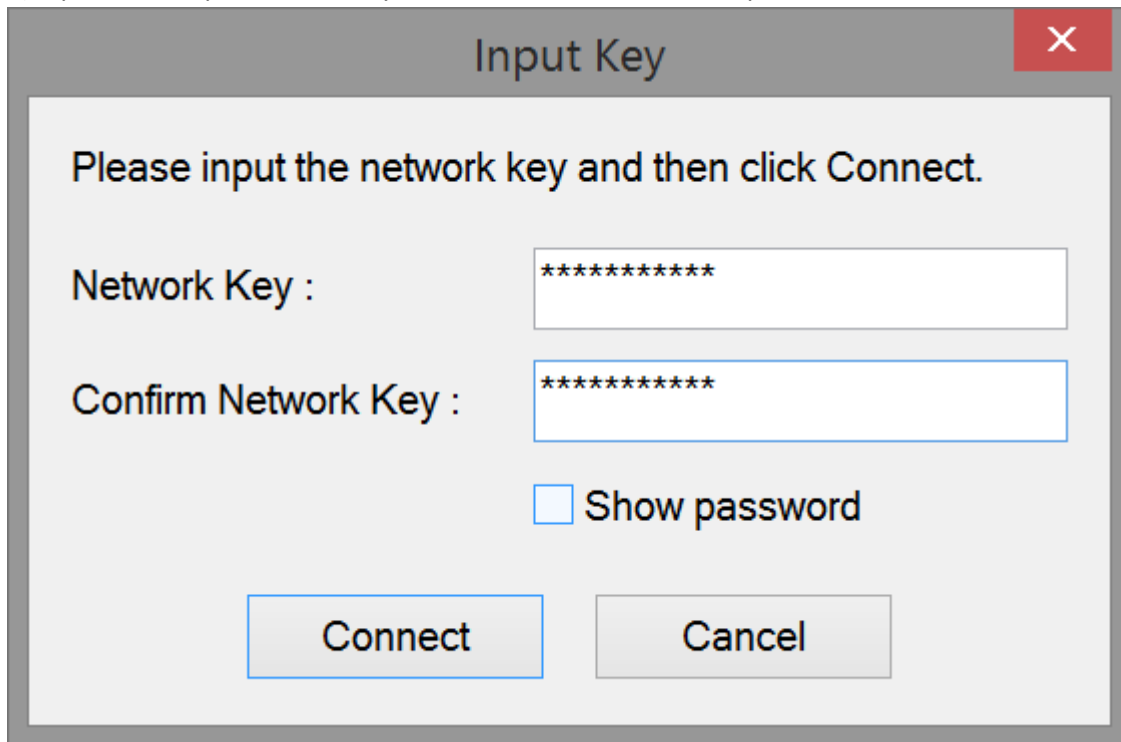


- 1) Open Hot-Spot at the TAB
- 2) Run the Easy Setup installer (From CD provided by TP-LINK print server)
- 3)



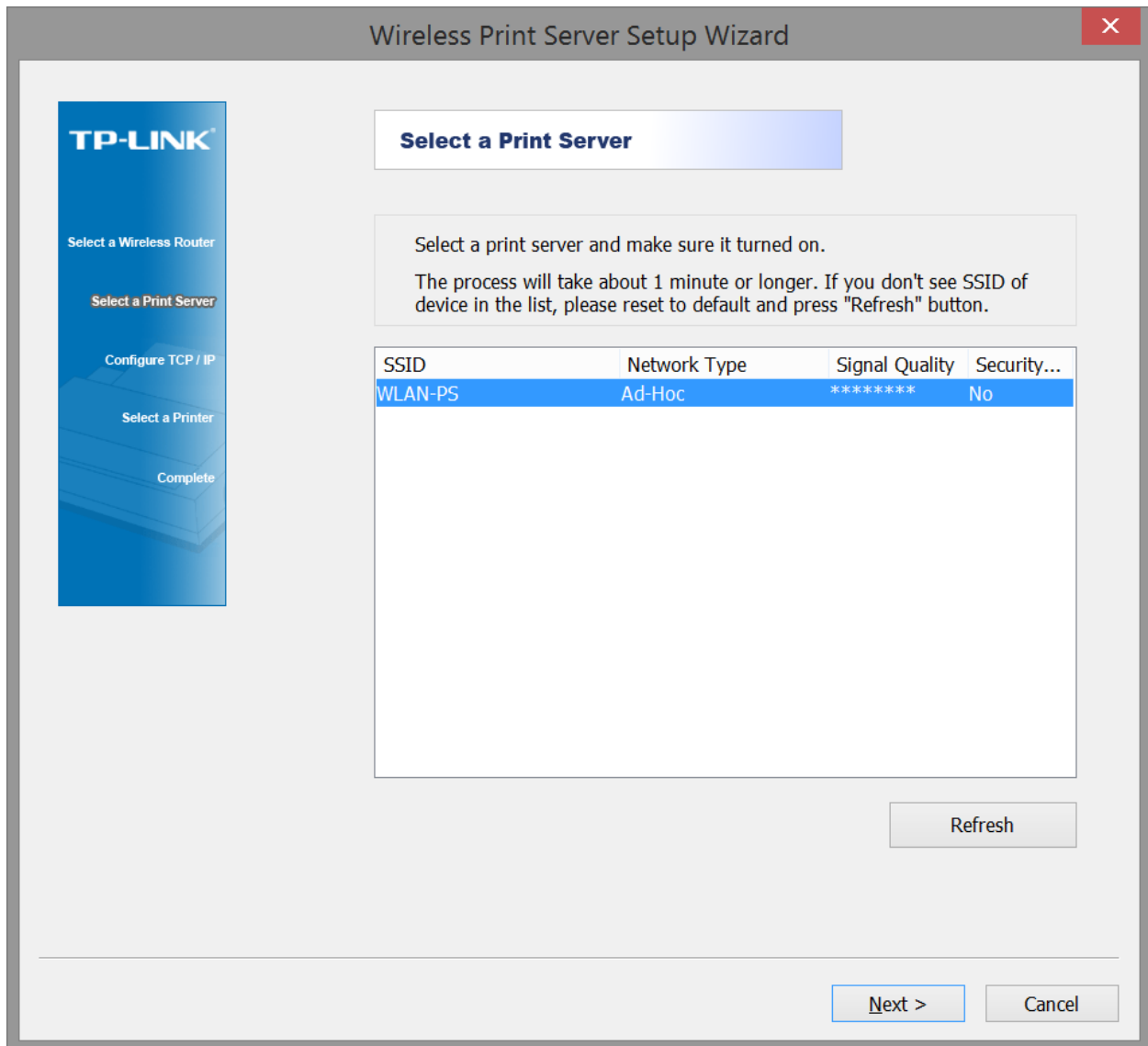
4) Input the wifi password that you set at the TAB's Wi-Fi Hotspot



The image shows a dialog box titled "Input Key" with a red close button in the top right corner. The dialog contains the following elements:

- A message: "Please input the network key and then click Connect."
- A label "Network Key :" followed by a text input field containing ten asterisks.
- A label "Confirm Network Key :" followed by a text input field containing ten asterisks.
- A checkbox labeled "Show password" which is currently unchecked.
- Two buttons at the bottom: "Connect" (highlighted with a blue border) and "Cancel".

5) Choose the Print Server from the list. IF the Print Server not in the list. You need to reset the print server before you can continue.



How to reset print server:

1. Unplug the power adapter of print server;
2. Press the Reset key on the print server and hold;
3. Plug-in the power adapter with the Reset key pressing for no less than 7 seconds;
4. Release the Reset key.

6) Set the IP Address as below.

The image shows a 'Wireless Print Server Setup Wizard' window with a sidebar on the left containing the TP-LINK logo and five steps: 'Select a Wireless Router', 'Select a Print Server', 'Configure TCP/IP' (highlighted in orange), 'Select a Printer', and 'Complete'. The main area is titled 'TCP/IP Settings' and contains the instruction 'Configure TCP/IP settings.' Below this are two radio button options: 'Obtain an IP address automatically (use DHCP)' and 'Specify an IP address' (which is selected). Three input fields are provided: 'IP address : 192 . 168 . 43 . 188', 'Mask IP address : 255 . 255 . 255 . 0', and 'Gateway IP address : 192 . 168 . 43 . 1'. A 'Note :' section states: 'If IP address has different network segment with wireless router, the print server couldn't work well.' At the bottom right, there are 'Next >' and 'Cancel' buttons.

Wireless Print Server Setup Wizard

TP-LINK

Select a Wireless Router

Select a Print Server

Configure TCP/IP

Select a Printer

Complete

TCP/IP Settings

Configure TCP/IP settings.

Obtain an IP address automatically (use DHCP)

Specify an IP address

IP address : 192 . 168 . 43 . 188

Mask IP address : 255 . 255 . 255 . 0

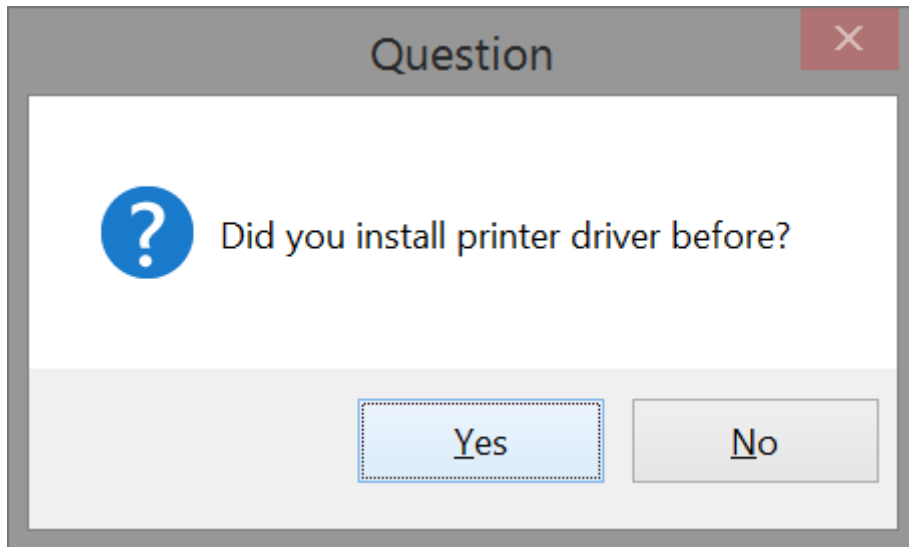
Gateway IP address : 192 . 168 . 43 . 1

Note :

If IP address has different network segment with wireless router, the print server couldn't work well.

Next > Cancel

7) Click "Yes" and continue.



8) Click "Cancel" to complete the installation.

